

Col. Mark Ditlevson, #74-18-005



980 Clover Lane  
Owatonna, Minnesota 55060  
"We'll Sell Anything,  
To Anyone, Anytime, Anywhere!"

November 2019						
S	M	T	W	T	F	S
					1	2
3	4	5	6	7	8	9
10	11	12	13	14	15	16
17	18	19	20	21	<b>22</b>	23
24	25	26	27	28	29	30

Mark this date on  
your Calendar!!!



## Mower County (2) Two Parcels Prime Agriculture Land Auction

# Another Real Estate Auction by...

Col. Mark Ditlevson



For more information contact:  
**Col. Mark Ditlevson**  
AUCTIONEER/REAL ESTATE BROKER  
#74-19-003  
980 Clover Lane, Owatonna, MN 55060  
507-456-1164 • mditlevson@charter.net



**Eldred and Orline Peterson Trust**

**Prime Agriculture**

**LAND!**

**FRIDAY, NOVEMBER 22, 2019**  
**10:00 A.M. SHARPI!**

**AUCTION**

# MOWER COUNTY

# Auction

## Two Parcels of Prime Agriculture Land

## FRIDAY, NOVEMBER 22, 2019

## 10:00 a.m. Sharp

**162.76 Acres**

**No Buyer's Fee**

**AUCTION SITE: Blooming Prairie Servicemens Club  
210 4th Street N.E. • Blooming Prairie, MN**

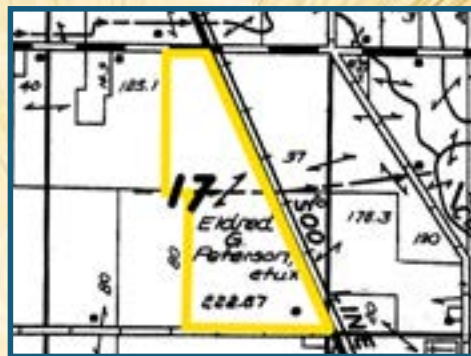
PROPERTY LOCATION: Section 17, Udolpho Township, Mower County

*Auctioneer's Note: Eldred and Orlene Peterson Trust has chosen to sell at public auction the following parcels of Mower County Farmland. If you are considering an expansion of your farming operation or looking for an investment opportunity, DON'T MISS THIS AUCTION!*

— Col. Mark Ditlevson

**PARCEL A**  
**82.17 Total Acres M.O.L.**  
With 78 Very Productive Tillable Acres M.O.L.  
C.P.I. Rating of 62 to 78

**PARCEL B**  
**80.59 Total Acres M.O.L.**  
With 72.96 Very Productive Tillable Acres M.O.L.  
C.P.I. Rating of 62 to 99



**F.S.A. & Real Estate Tax Information**  
Total Acres .....162.7  
Total Tillable Acres .....150.9  
Corn Yield .....150 B.P.A.  
Soybean Yield .....41 B.P.A.  
2019 Real Estate Taxes ..... \$8,044.00

**Inspection:** Anytime, upon request.  
General information is available from Col. Mark Ditlevson, MD Auction Co., 980 Clover Lane, Owatonna, MN 55060 (507) 456-1164 Cell.

**Auction Terms:** Successful bidder(s) are required to remit day of auction as follows: Parcel A – \$25,000, Parcel B – \$25,000. **All earnest monies are non-refundable if buyer(s) fails to close.** Buyer(s) shall enter into purchase agreement immediately following the conclusion of the auction. The balance of the purchase price shall be due on or before **December 22, 2019.**

**Agency:** MD Auction Co. and its representatives are agents of Seller.

**Announcements:** Property information provided was obtained from sources deemed reliable. The auctioneer makes no guarantee as to its accuracy. All prospective bidders are urged to fully inspect the property, its condition and rely on their own conclusions. Any announcements made auction day by the auctioneer will take precedence over any previous material or oral statements. Bidding increments are solely at the discretion of the auctioneer.

**Owner**

# Eldred & Orlene Peterson Trust

For more information contact:

**Col. Mark Ditlevson**  
AUCTIONEER/REAL ESTATE BROKER

#74-19-003

980 Clover Lane, Owatonna, MN 55060

**507-456-1164 • mditlevson@charter.net**

